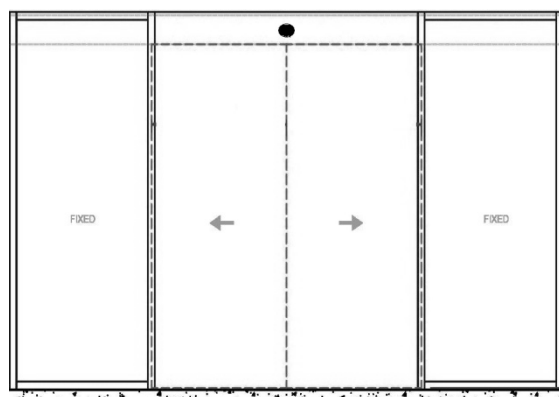
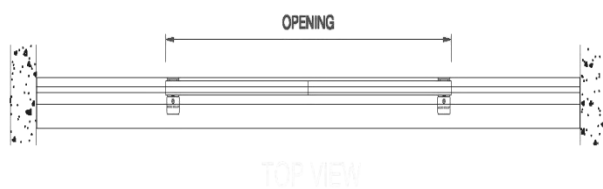


KIMMATIC

AUTOMATIC DOOR

Specification	KM-1001 DIRECT TYPE (Anodized Aluminum cover)
Maximum Door Weight	1 X 150kg single door / 2 X 120kg double door
Door Width	1000mm - 1400mm (single) / 650mm - 1200mm (double)
Opening / Closing Speed	max 600 mm/sec (adjustable)
Holding time in opening	one minute
Power	AC 220, 50-60 Hz
Engine	90W DC Motor (dunker type)
Ambient Temperature	negative 20 to positive 50 centigrade
Emergency Open	Optional



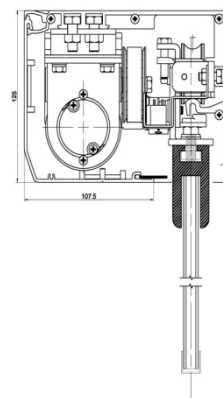
**KIMMATIC
KM-1001**

Calculation of size for frame less door

Door width	single door	door width = OW + 50 mm
	double door	door width = OW / 2 + 50 mm
Door height	with cover 125 mm	door height = Passage height - 5 mm

CROSS SECTION

FRAMELESS GLASS DOOR



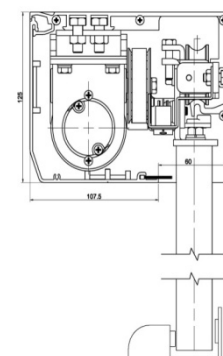
**KIMMATIC
KM-1001**

Calculation of size for frame or wooden door

Door width	single door	door width = OW + 50 mm
	double door	door width = OW / 2 + 50 mm
Door height	with cover 125 mm	door height = Passage height + 15 mm

CROSS SECTION

FRAME DOOR



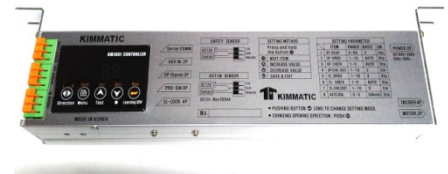
MOTOR: Model :RM63X9024

Rated Voltage : DC 24V / 90W
Rated Current : 5.1 A
Rpm : 3300
Torque : 27 Ncm
Starting Current : 34.1 A
Reduction ratio : 10:1
Encoder :CPR 12 CH2 Magnetic type
DC Motor with worm gear
Built in electric locking system
DUNKER TYPE



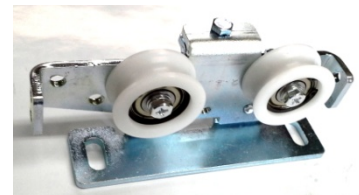
CONTROLLER:

Micro-processing type, Switch mode power supply (SMPS),
Obstacle detection, Self-circuit protection, Built in transformer,
Self learning programming, Digital screen monitor, Easy
adjustment for closing and opening speed.



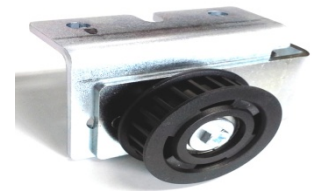
HANGER ROLLER:

Detailed adjustable door mounting. Smooth and silent operation
by high density and high elasticity roller. Two wheel type that
can carry maximum 120kg for double door and 150kg for single
door, bearing made in JAPAN, mostly used in automobile
industry.



IDLE PULLEY:

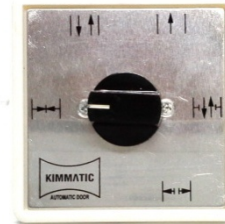
Made in high durability elasticity gear type, adjust tension easily.



DOOR FUNCTION SWITCH:

Operating mode: Automatic, Keep open, One way, Keep closed, 70% open

Knob switches are supplied with an brushed aluminum or plastic faceplate, Zinc alloy die cast housing and cylinder, Bright nickel plated standard, Knob may be withdraw in each position, High reliability, Less occupied space, Easy installation and maintenance



MICROWAVE SENSOR (EAGLE EYE):

Realization technology: Microwave and microprocessor

Power source voltage: 12v-24vAC+/-10%; 12v-30v DC

Power source frequency: 50-60Hz

Output retention time: 0.5 second

Temperature range: -20°C to 55°C

Protection rate: IP52

Assemble an altitude maximal: 3m

Assemble a dip angle: 15° 30° 45° 60°

Outer covering materials: ABS Plastic



COMBINED RADAR ACTIVATION AND INFRARED SAFETY SENSOR:

Combined radar activation and Infrared safety sensor is used for automatic sliding door, folding door and Curve door. Radar technology is for door activation. Infrared technology is for door safety entrance.

Have function of background self-learn. Can learn background automatically when power on. Microwave technology adopts the Germany microwave sensor module.



PHOTO I BEAM SAFETY SENSOR (SINGLE BEAM)

Adopt microcomputer control technology, high integration with high stability. International optical lens design with good focus quality, controlled angle is rational; easy to installed. Far transmit distance with strong, anti-interference ability. Adopting and receiving filter, decoding, amplification, system of German technology. Effective solution to anti-interference of natural daylight. Emission electric eye adopts low-power consumption design with far transit distance. Emission contact and receive contact output separately with shielding line. 12-36v AC-DC Power Input



TIMING BELT:

Brand: Kimmatic STS S8M , Stable power train.



WIRELESS TOUCH SWITCH:

ADOPT uniformity frequency, high stability of wireless signal receiving and sending. Solidification PU varnished shell, dapper appearance with anti-off screw. Operation frequency 433M Panel pushing with low-power consumption, long service life battery. Three point of trigger pressing design to ensure the effective action. Large capacity output, available to be used with auto door, electric lock and access controller. Door open within 2s when signal received. Wide voltage input of AC/DC 12-36V. Function switch with voice indicator, power indicator turns green to confirm the validity of operation.

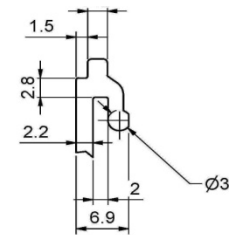
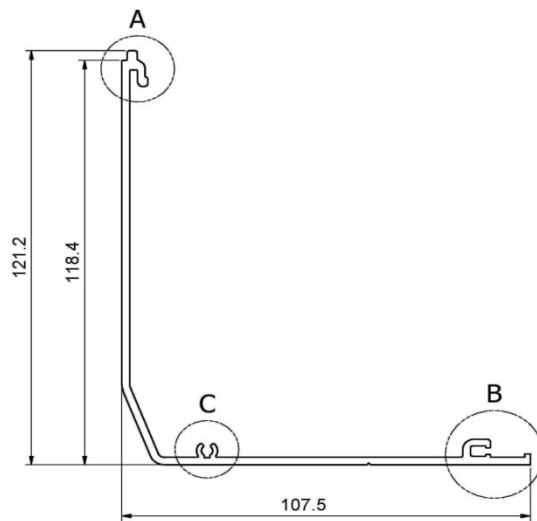


REMOTE CONTROL (TRANSMITTER/RECEIVER):

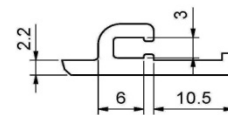
High-current electric lock output module. AC/DC 12V-36V DC power input and convenient to take power from sliding door units. Delicate shell design, easy to fixed, compact and small size. Built in surge absorber to prevent the return spark of electric lock. Remote transmitter with 4 keys to carry out the 4 operation of auto door All induction gated signal unified into the extender which outputs the signal to auto door and electric locks. With time difference setting to ensure the auto door runs automatically. Using remote controller to switch function, validity action confirms by voice indicator .



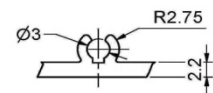
PROFILE COVER:



A (2:1)

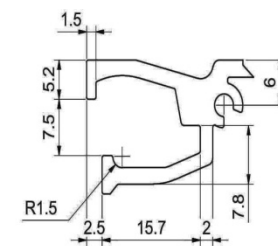
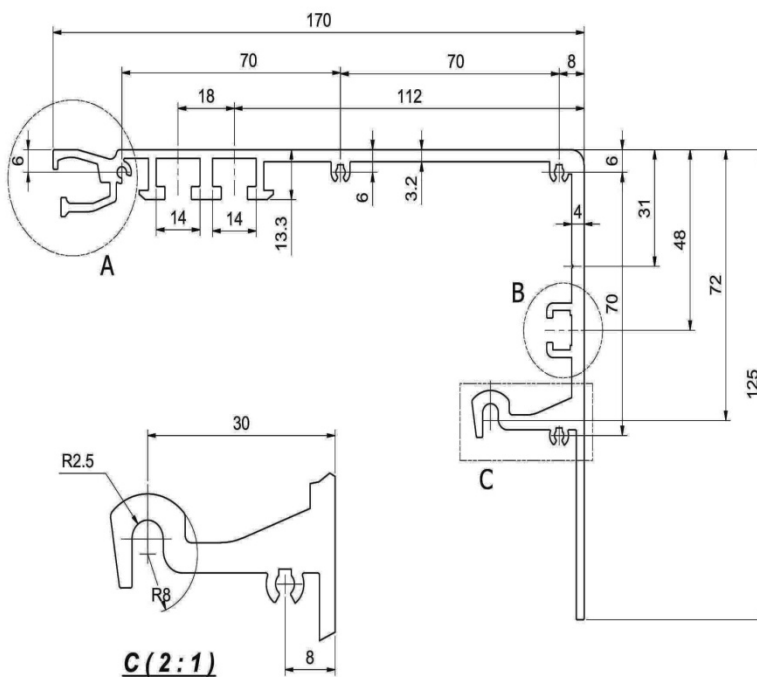


B (2:1)

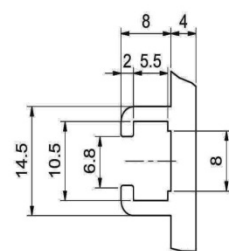


C (2:1)

PROFILE RAIL:



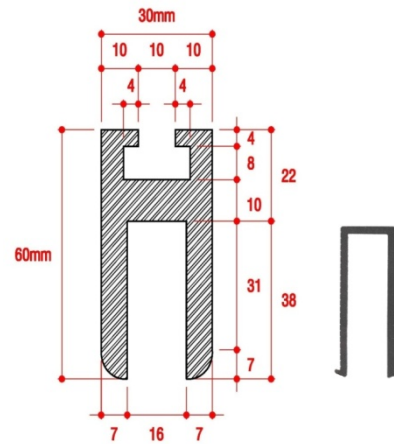
A (2:1)



B (2:1)

C (2:1)

*Aluminium (Anodized color) with
U Channel rubber gasket glass holder 2mm
thk
Glass hole required to hold the glass door.*



*Aluminium glass holder with rubber,
Fit to use for glass door thickness
10mm,12mm,14mm , hole not required.*

